

Equipment Cabinet Environmental Monitoring

Key Features

- > Each EMCU-1-1B is accessible via IP through networked CDU
- > HTML GUI, Telnet or SNMP management
- > **Cabinet Environment Status:**
 - > Supports two dual-function temperature & humidity probes (% RH)
 - > Water & fluid detection sensor
- > **Cabinet Intrusion Detection:**
 - > Supports four dry contact closure door sensors
- > **Analog Input Sensor**
 - > Supports supplementary sensor requiring power feed
- > **Notification Warnings:**
 - > SNMP and e-mail alerts through CDUs interface
 - > Thresholds & SNMP Traps to two destinations
- > **IP Management through Sentry CDUs**
 - > HTML Web Interface
 - > Command Line Interface
 - > No additional software required
- > **Mounting**
 - > Flexible zero U mounting
 - > Fast installation -- 5 minutes or less
- > **Warranty:** 2 years

EMCU-1-1B



IP-based Solution for Monitoring Environmental Conditions in the Data Center Equipment Cabinet

Ever increasing densities of vertically racked servers conserve valuable floor space in the data center, but the resulting power consumption and heat dissipation create new concerns for data center managers. Environmental Monitoring, particularly temperature & humidity, is a must for any sensitive infrastructure.

Monitoring temperature in equipment cabinets is vital to the server's performance and controlling infrastructure cooling costs. The Environmental Monitoring Control Unit (EMCU) monitors vital environmental conditions in the equipment cabinet. Prevent environmental conditions from exceeding recommended thresholds and protect the equipment cabinet's assets from harmful elements.

Each EMCU supports:

- > 2 Additional temperature and humidity measurements
- > Water sensor
- > 4 Dry contact closure door sensors

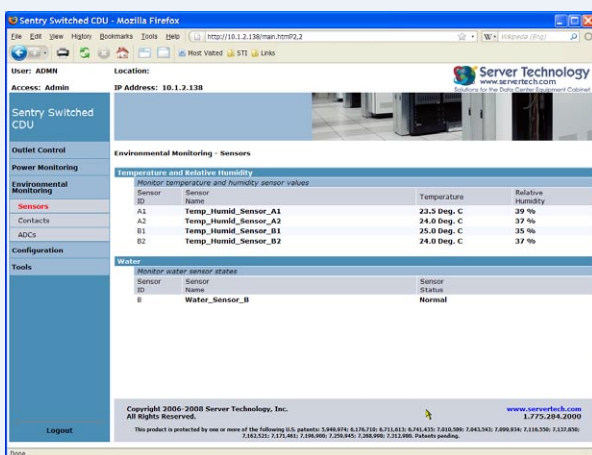
The EMCU-1-1B assures network managers that environmental conditions are within defined tolerances and that unauthorized entry into the equipment cabinets does not go unnoticed.

The EMCU-1-1B can be located in data centers, co-lo sites, web hosting facilities, telecom switching sites, POP sites, server closets, and any unmanned area that needs to be monitored. Install the EMCU-1-1B in the equipment cabinet and gain access to environmental conditions from a web or serial interface through one of Server Technology's IP addressable CDUs.

Model	Description	Mounting
EMCU-1-1B	Environmental Monitor Control Unit with (1) combination Temperature & Humidity Probe 10ft (3m)	Mounting tabs included for zero U mounting
EMTH-1-1	Temperature & Humidity Probe 10ft (3m)	—
EMWS-1-1	Water Sensor Probe, 12 in. (305 mm), 10 ft (3 m) cord	—

Additional Specifications

Interface through HTML GUI



Web Interface

- > Temperature
- > Humidity
- > Water Detection
- > Door Cabinet Status

Measurement Range

0 - 100% RH

Absolute RH Accuracy

+ / - 3.5% RH

Repeatability

+ / - 0.15 RH

Temperature Accuracy

+ / - 0.5°C

Analog Sensor

Accepts 3rd party analog sensors. Input 0 V to +5 VDC

Water Sensor Probe

Thermally bonded polymer coated carrier

Contact Closure Sensors

Accepts up to four 3rd party contact closer sensors. Wago® spring-loaded 3-position terminal block

LED Confirmation Indicators

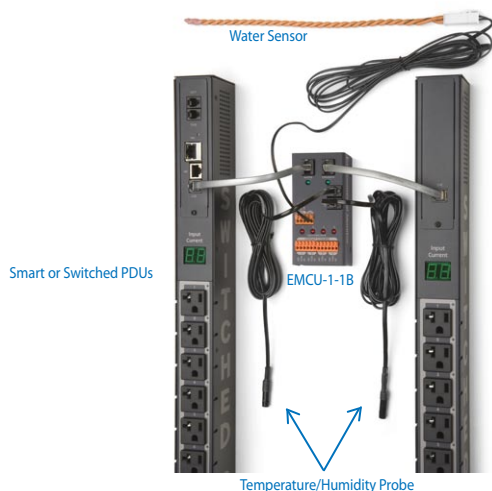
Signal "Fault" conditions to contact closures

Dimensions (H x W x D)

4.57 x 2.32 x 1.22 in (116 x 59 x 31 mm)

Weight

8.8 oz. (250g)



Server Technology

HEADQUARTERS - NORTH AMERICA
 Server Technology, Inc.
 1040 Sandhill Drive
 Reno, NV 89521
 United States
 1.775.284.2000 Tel
 1.775.284.2065 Fax
 sales@servertech.com
 www.servertech.com
 www.servertechblog.com

EMEA
 Server Technology Intl
 Sienna Court
 The Broadway
 Maidenhead
 Berkshire
 SL6 1NJ
 United Kingdom
 +44 (0) 1628 509053 Tel
 +44 (0) 1628 509100 Fax
 salesintl@servertech.com

APAC
 Server Technology Intl
 37th Floor, Singapore Land Tower
 50 Raffles Place
 Singapore 048623
 +65 (0) 6829 7008 Tel
 +65 (0) 6234 4574 Fax
 salesintl@servertech.com