



Server Technology
Solutions for the Data Center Equipment Cabinet

If you manage a datacenter,
we have a solution for you.

How do I...

- Distribute and load balance 3-phase power?
- Smart load shed power to the equipment in the cabinet?
- Monitor Voltage?
- Monitor True RMS input current?
- Execute a new orderly shutdown?
- Reboot remote servers and network devices?
- Know when the cabinet temperature is too high?
- Provide adequate power distribution for blade servers?



Sentry : Switched Cabinet Power Distribution Unit Product Family
with Exclusive Integrated Temperature and Humidity Monitoring

Switched CDU

Flagship CDU with Remote Monitoring and Management, including Reboot Commands to connected servers and network equipment, and Temperature and Humidity monitoring.

Sentry : Switched CDU

Cabinet Power Distribution Unit (CDU) with Remote Access, Reboot, Power Cycling and Temperature & Humidity Monitoring.

Zero-U

CW-16V1	CW-16V2	CW-24V2	CW-24V3	CW-32VD1	CW-32VD2	CW-48VY
100-120V	208-240V	208-240V	3-Phase, 208-240V	100-120V	208-240V	3-Phase, 208-240V
20A or 30A	20A or 30A	20A or 30A	20A or 30A	20A or 30A	20A or 30A	30A
26U (44.5in)	29U (49.5in)	40U (69in)	40U (69in)	29U (50in)	29U (50in)	40U (69in)



Switched CDU : Key Features

The Switched CDU products provide the capability to monitor and control cabinet power remotely for a data center or remote branch office. The Switched CDU's combine remote configuration and management with power distribution and power and environmental monitoring. Reboot a single or dual power server with one command. Receive SNMP alerts when power or environmental conditions exceed thresholds. Assign specific access rights to designated user groups or individuals.

Only the Switched CDU products provide the flexibility needed for all data centers and remote sites, including power requirements for high-amperage, high voltage, UL 60950-1 Branch Circuit Protection and SNMP traps including current monitoring.



Input Current Monitoring



Temperature and Humidity Monitoring



Button Mounting



Linkable Expansion Module

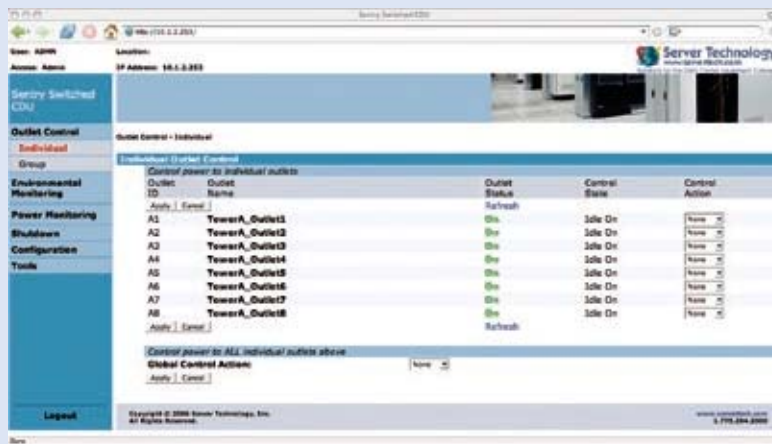


Branch Circuit Protection with Fuse Retractor

Switched CDU : Access, Security & Communication

Secure Remote Administration Interface

- > Easy to use secure, integral, web based GUI configuration tool
- > Temperature Support (Celsius or Fahrenheit)
- > Logging of all authentications, configuration changes and system events
- > Syslog logging protocol support
- > Email notifications for multiple users of log, event, authorization, power and configuration messages
- > Automatic Firmware Updates via FTP server
- > Strong Password Support & Pre-Login Banner
- > Ability to Ping an IP address to see if the device is working properly
- > Grouping of outlets across multiple CDU's
- > SNMP: Traps based on Status, Changes, Load, Temperature and Humidity
- > Supports 112 user accounts, 22 simultaneous logins, and a dedicated SNMP connection



New "Power" Information

- > Input Feed Voltage (VAC)
- > Input Feed Watts (W)
- > System total Watts (W)
- > System footprint (sq. ft.)
- > System watts per square foot (W per Sq. ft.)

Communication Tools

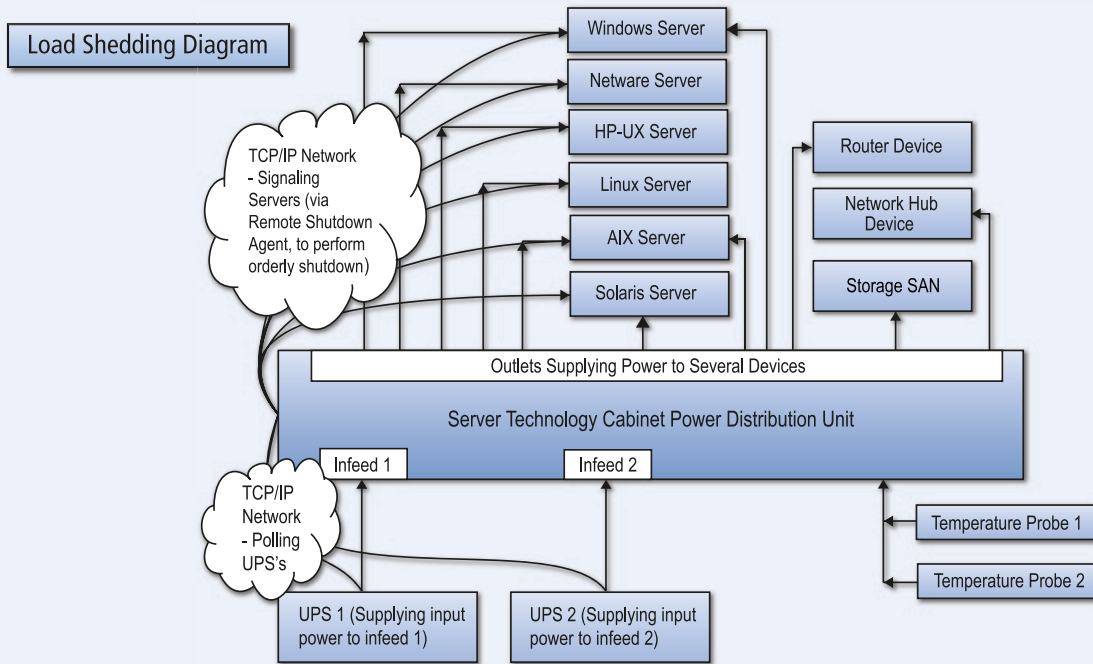
- > Web Interface (HTTP, HTTPS)
- > SSL, SSH
- > Telnet
- > SNMP
- > Serial RS-232 Access with Scriptable Command Line Interface

Other Communication Tools

- > LDAP
- > TACACS+
- > DHCP

Sentry : CDU Smart Load Shedding

Integrated Load Management



Load Shedding

Server Technology is the first to offer data center managers the ability to automatically manage CDU power outlets based on key operating parameters. These key parameters include temperature, in-feed load and UPS power status. Each outlet may be controlled by one or more of these parameters. Should the temperature or load current exceed defined thresholds or the UPS lose power and go onto battery, all or a portion of the loads may be automatically shed to ensure longer operational life of your critical devices. If one or more servers are being shed, a controlled shut down may be accomplished via a remote shutdown agent. Along with automatic shedding, an "auto-recovery" function ensures that all devices are brought back to a defined state when conditions return to normal.

Other Features Include

- > Easy to use, integral, web based GUI configuration tool
- > Logging via SYSLOG of all load shedding actions
- > "Auto-recovery" with a reboot delay time when conditions return to normal
- > Regular polling of UPS power state via SNMP
- > Each CDU outlet is assigned the IP address of the connected device for shut down notification
- > Remote shutdown agent for orderly server shut down
- > SNMP trap notifications
- > SMTP based email load shedding event notification

Enterprise CDU Managers

Sentry CDU's are compatible with our Enterprise View software as well as DS View® 3 software by Avocent. Enterprise management solutions allow the user to remotely access, manage, monitor and control target devices from one central location.



<p>UK / EU / EMEA Server Technology International Sienna Court The Broadway Maidenhead Berkshire SL6 1NJ United Kingdom +44.1628.509053 Tel +44.1628.509100 Fax</p>	<p>NORTH AMERICA / ASIA Server Technology, Inc. 1040 Sandhill Drive Reno, NV 89521 United States +00.1.775.284.2000 Tel +00.1.775.284.2065 Fax sales@servertech.com www.servertech.com</p>
--	--